



- Waterbeach
- Thriplow
- St Neots
- Stapleford
- Papworth Everard
- Kimbolton
- Huntingdon
- Godmanchester
- Fenstanton
- Eddington
- Cambridge
- Cambourne
- Barrington
- Addenbrooke's Hospital

Whippet

Local buses Edition ten

Join our team!

Like what we do?

We can help put the enjoyment back in to bus and coach work. We are a small team but operate a wide selection of services. We aim to create duties for drivers that are achievable, even when the traffic is very heavy. Look out for job opportunities on our website.

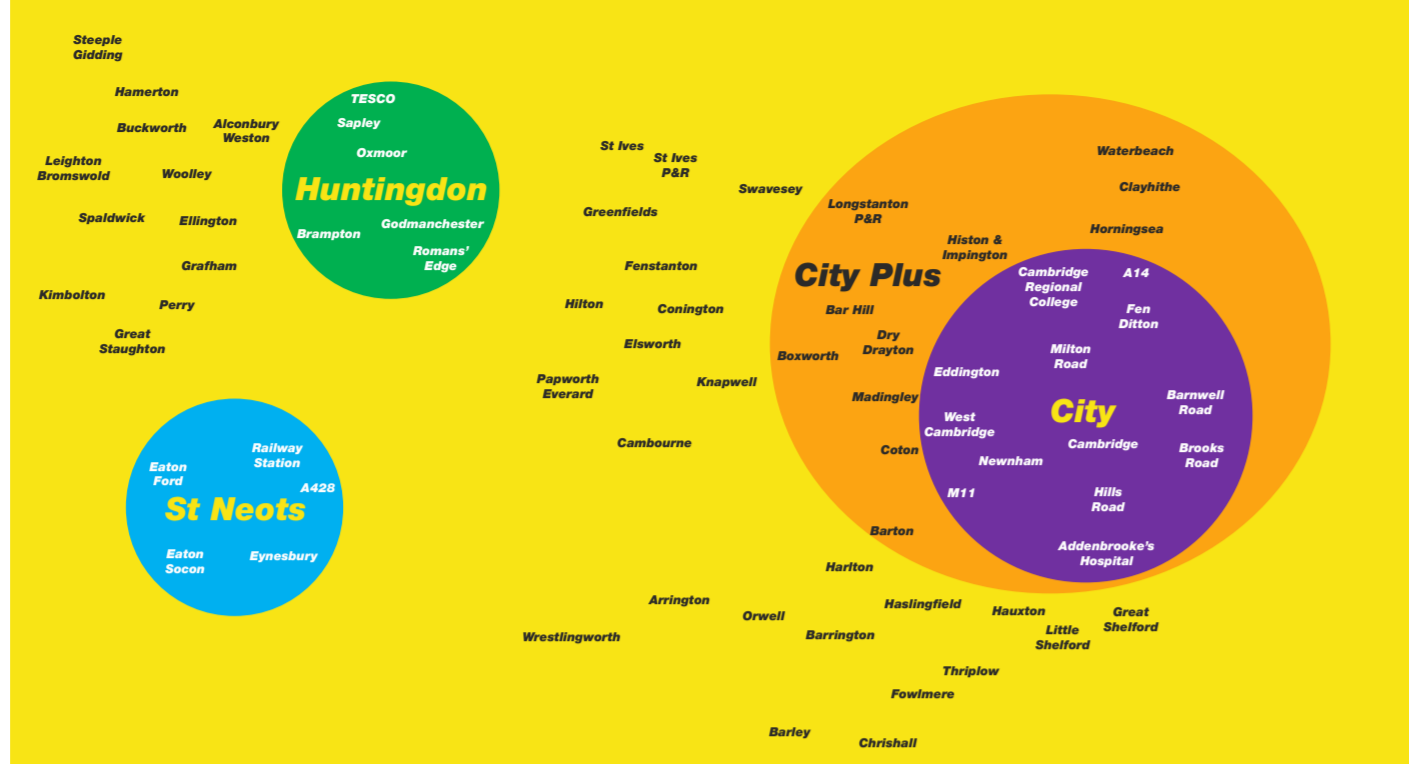
www.whippet.co.uk
info@whippet.co.uk
 @gowhippet

Whippet Coaches Limited
 Unit 1, 2 Rotten Way
 Buckingham Business Park
 Swavesey
 Cambridgeshire
 CB24 4UG



Whippet Coaches is part of the Tower Transit Group

Ticket Zones

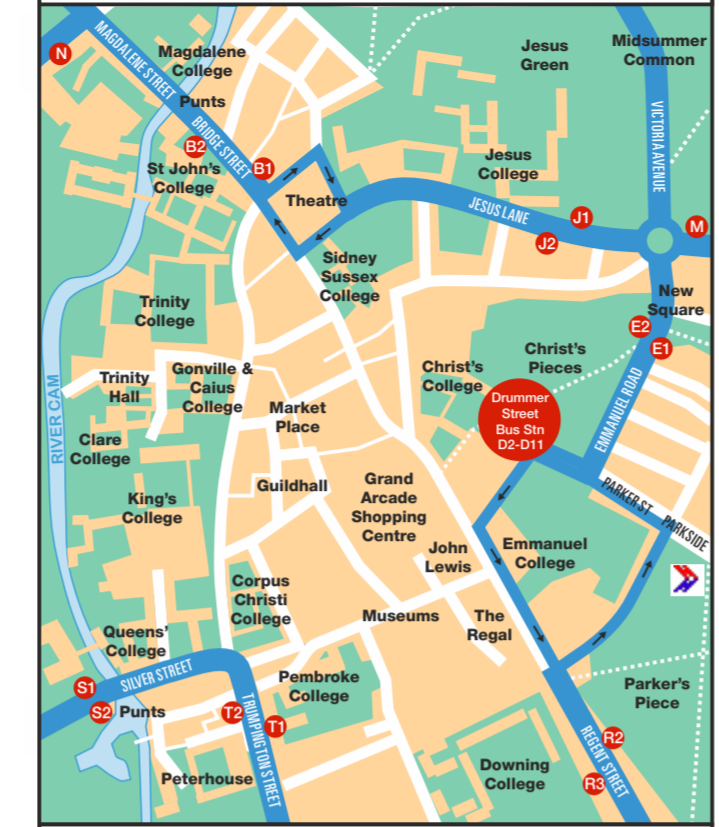


Ticket Prices

As at 2 September 2017

	Purple Ticket Zone	Orange Ticket Zone	Green Ticket Zone	Blue Ticket Zone	Yellow Ticket Zone	Adult	Student with NUS Card or other appropriate ID	Child (Age 5-15)	One+Two adult and up to 2 children	Group up to 8 people (no more than 1 adult)
All Zones Day Rover	£6	£4.50	£4	£6.50	£11				One+Two and Group tickets are not valid before 09:00 on Mondays to Fridays (except Public Holidays) and routes 400 and 401. Valid at any time at weekends.	
All Zones Week Rover	£22	£17	£15							
All Zones 4-Week Rover	£70									
City Plus Day Rover	£4.50	£3.50	£3							
City Plus Week Rover	£17	£13	£12							
City Plus 4-Week Rover	£50									
City Day Rover	£3		£2							
City Week Rover	£10									
Huntingdon Day Rover	£2.80						£10			
Huntingdon Week Rover	£12.50									
St Neots Day Rover	£2.30						£9			
St Neots Week Rover	£10									
Multibus Day #	£8									
Multibus Week #	£33									

Boarding points - Cambridge



Route	Destination	Bus stops
8	Bar Hill / Papworth / Hilton	B2 D3 J2 N
31	Fowlmere / Barley	D4 R2
75	Orwell / Croxford / Wrestlingworth	D5 R2
75	Long Road 6th Form College	D5 R2
196	Waterbeach	D7 M
U	St Ives / Fenstanton	D11 E2
U	Addenbrooke's Hospital / Rail Station	S1 T1
U	Eddington	S2 T2
X3	Cambridge Railway Station	B1 D4 J1 R2
X3	Huntingdon / Godmanchester	B2 D3 J2 N

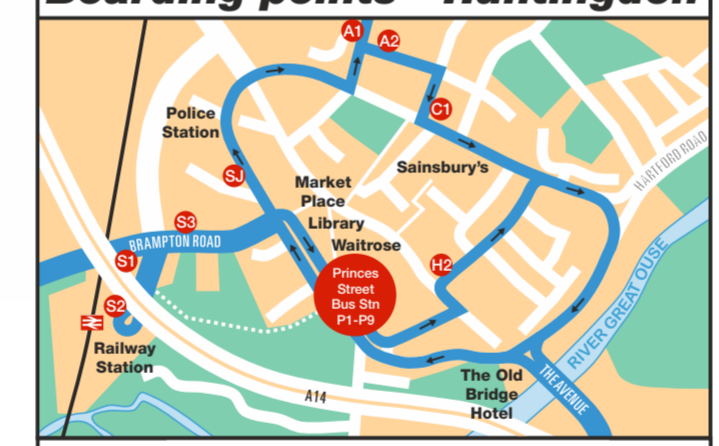
* = National Express Coaches pick up/set down here

Boarding points - St Ives



Route	Destination	Bus stops
C	Cambridge	B1 S1* S5
C	Fenstanton	S1 Q1

Boarding points - Huntingdon



Route	Destination	Bus stops
400	Spaldwick / Grafham	P9 S1
401	Leighton Bromswold	P9 S1
478	Huntingdon Railway Station	P4
478	Godmanchester	A2* C1* H2 P3
		S2* S3*
478	Hinchingsbrook School	P4 S1
478	Sapley, Tesco Extra	P4 SJ A1
X3	Cambridge	H2 P6

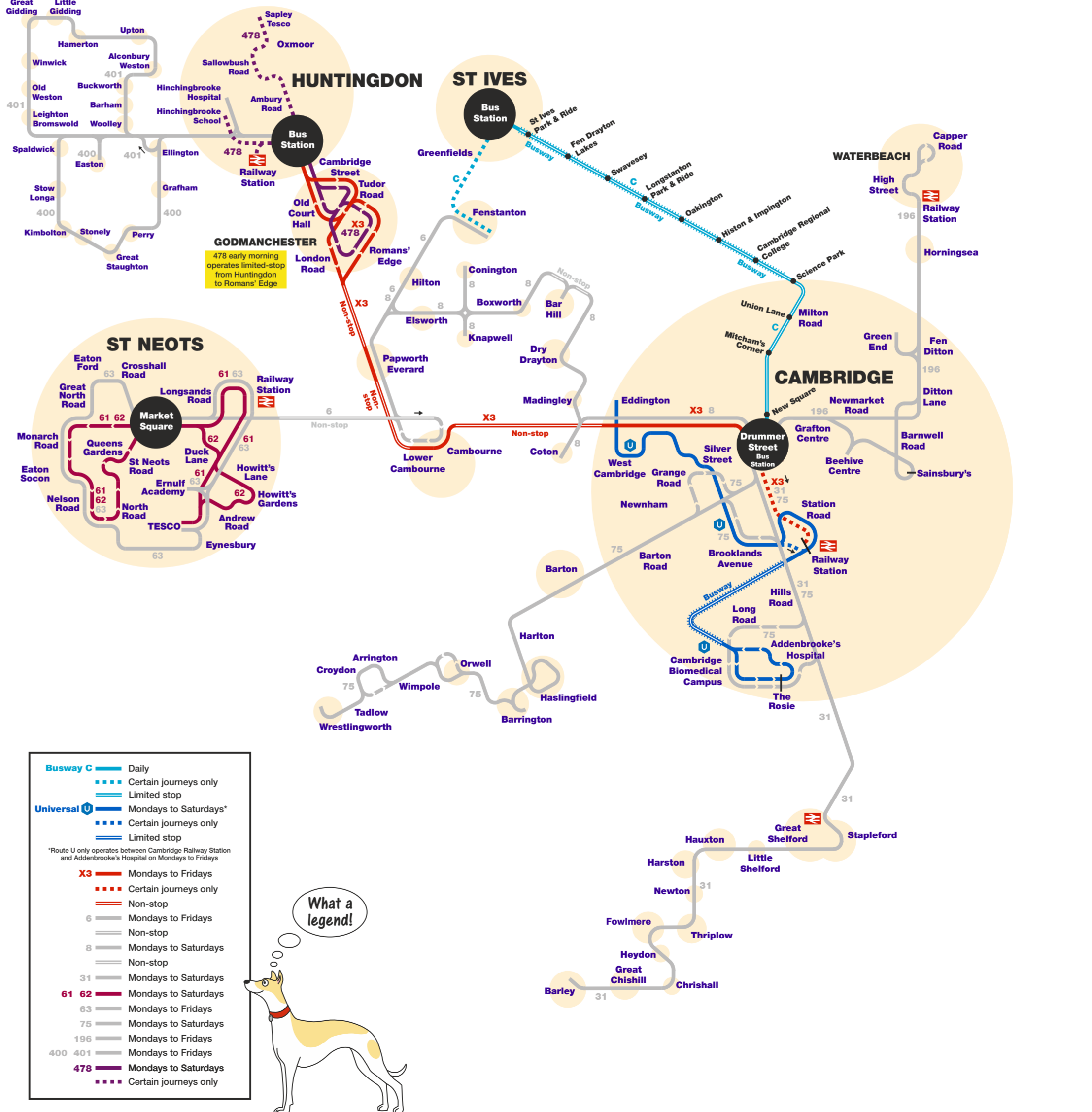
* = Journeys that start at the bus station do not stop here

Boarding points - St Neots



Route	Destination	Bus stops
6	Fenstanton	A H2
61	Eaton Socon	C F1 H1*
61	Eynesbury (via railway station)	E F2 H2
62	Eaton Socon	C F1 H1*
62	Eynesbury (via Duck Lane)	E F2* H2
63	Railway station via Eaton Socon (am)	C
63	Eaton Socon via railway station (pm)	E H2

* = Journeys that start at Market Square do not stop here



Busway C

- Daily
- Certain journeys only
- Limited stop

Universal U

- Mondays to Saturdays*
- Certain journeys only
- Limited stop

*Route U only operates between Cambridge Railway Station and Addenbrooke's Hospital on Mondays to Fridays

X3

- Mondays to Fridays
- Certain journeys only
- Non-stop

6

- Mondays to Fridays
- Non-stop

8

- Mondays to Saturdays
- Non-stop

31

- Mondays to Saturdays
- Non-stop

61 62

- Mondays to Saturdays
- Mondays to Fridays
- 63 Mondays to Saturdays
- 196 Mondays to Fridays
- 400 401 Mondays to Fridays
- 478 Mondays to Saturdays
- Certain journeys only



Passengers must be in possession of a valid ticket or pass throughout their journey, otherwise the Standard Fare (€20) will be payable. We accept cash only on board our buses and coaches. Contrary to canine belief, dog biscuits and bones are not legal tender. Our drivers give change but they only start their shift with a limited amount and this can get used up quickly. Drivers are not obliged to accept large amounts of coins above the standard allowances. These are: 20p made up of 1p and 2p coins; £5 made up of 5p and 10p coins; £10 made up of 2p and 50p coins. Drivers should also adhere to these limits when giving change.

Whippets travel free when accompanied by a human with a valid ticket or pass. Other friendly pets are also carried free, so long as they do not present a hazard or disturbance to customers. If another animal is already on board then the driver may refuse travel (excluding guide dogs and assistance dogs). Guide dogs in training are also permitted, subject to the driver's discretion.

All dogs must be on a lead, should sit on the floor but not blocking the aisle and on double-deckers should be taken upstairs.

All of our buses* have space for one wheelchair user but we cannot guarantee this facility. We will carry most wheelchairs and electric wheelchairs up to 700mm wide, 1200mm long and a total weight of 300kg (including the occupant). Mobility scooters are generally not carried unless they are class 2 and not designed for use on roads (those that don't have headlights and indicators).

If the wheelchair space is already occupied by a baby buggy or a sleeping dog then the driver will ask for the space to be vacated. However, we cannot force customers to move or leave the bus. Wheelchair users do not have an absolute priority over others but we will always try our best to get everybody where they need to go.

*routes 400 and 401 are normally operated by a coach which is not wheelchair accessible

Adult fares are issued to all passengers aged 16 or over, unless in education and can present a valid NUS Card or other appropriate ID.

Child single / return fares (including 10-Journey tickets) are not available before 09:00 on Mondays to Fridays (including school holidays). Child Rover Tickets are valid at any time. There are no restrictions on Public Holidays. Up to 2 children aged under 5 (who do not occupy a seat to the exclusion of a fare-paying passenger) travel free with anybody who purchases an adult ticket or has a valid adult pass (including English National Concessionary Passes).

English National Concessionary Passes are valid for free off-peak travel. More details can be found online at: www.cambridgeshire.gov.uk/info/20017/buses/124/free_bus_pass

Please refrain from bringing hot food aboard our vehicles, as it can be unpleasant for fellow passengers. Whippets can also become very excited by the tempting smells. If you bring a hot drink on board please make sure that it has a suitable lid as drivers may otherwise refuse entry.

We do not want to refuse alcohol aboard our buses, but customers will be asked to leave the vehicle if their behaviour becomes aggressive, loud or generally unpleasant to other customers.



We must be barking!

Students* £1

Purple One is the name of our special single journey ticket within the City (purple) zone.

* NUS Card or other appropriate ID required
 College and university staff with ID also eligible

Hello! (woof!)

Welcome to the tenth edition of our pocket-sized guide to Whippet bus services. Please make sure you keep a copy handy as you never know when our buses might come in useful.

We operate a number of services in Cambridgeshire. Please look at the network diagram to find the services that best meet your needs. There's also an index of places served below.

Changes to routes since last time:
 Due to various circumstances, we no longer operate routes 1, 1A, 2, 3, 5, 7A, 9, 12, 15, 16, 18, 21, 45, 45A, 114, 117. See www.travelineouteast.org.uk

Route C now serves Fenstanton at certain times of the day, providing a partial replacement for the 1A between Fenstanton and Cambridge City Centre. Route C no longer serves Somersham or parts of St Ives. In Cambridge, all journeys now terminate at Drummer Street Bus Station.

Route X3 is diverted in Godmanchester to serve the same roads as the 478. Buses towards Cambridge no longer serve the stops at Old Court Hall or on London Road near the Exhibition pub. The X3 will no longer operate along St Neots Road between Cambourne and Cambridge (buses will run non-stop along the A428 dual carriageway instead). The first stops east of Cambourne will be the ones on Madingley Road, outside the Park & Ride site. Route X3 will also no longer deviate via West Cambridge, stopping on Madingley Road instead. One weekday morning journey now continues to the railway station.

Routes 476 and 477 are replaced by new route 478, which also serves the new housing development at Romans' Edge. Some daytime journeys continue to Tesco Extra in Sapley - ideal for shopping or leisure activities.

Route U will be extended to the new town of Eddington from Friday 8 September. Passengers who use the Madingley Road Park & Ride site can use the new bus stops on Eddington Avenue (there is a gate in the north east corner of the car park). Pay your parking at www.cambridgeparkandride.info

Changes to fares since last time:
 The Huntingdon Day Rover ticket is now £2.80. Adult single fares on routes X3 and 478 within Huntingdon and Godmanchester are now £2. Adult single fares on routes C, X3 and 8 within Cambridge are now £2.

Scholars/Students term tickets are no longer available. Our Rover tickets offer reasonably priced alternatives and can be purchased from the driver.

All valid Whippet tickets for routes C, A are accepted for travel on board other operators' buses on our 1A, 9 and 15 between St Ives and Fenstanton.

open this way for
 Ticket details and conditions and a network diagram of our local bus services

below Index of places served

open this way for times of all bus services, details of forthcoming public holidays and school term times

All details correct as at 23 August 2017 but Whippet Coaches cannot be held responsible for any loss or delay caused by any errors.

Bus routes	Bus routes
Addenbrooke's Hospital U 31 75*	Kimbolton 400
Alconbury Weston 401	Knawwell 8
Arrington 75	
Babraham Road P&R 31*	Leighton Bromswold 401
Barham 401	Little Shelford 31
Barrowell 196	Long Road 6th Form Coll U 75
Bar Hill 8	Longstanton (Busway) C
Barley 31	Lower Cambourne X3 6
Barrington 75	
Barrowell Retail Park 196	Madingley 8
Buckworth 401	Madingley Road P&R U*
	Milton Road 196
	Newhampton 31
	Newmarket 196
	Newmarket Road 196
	Newnham 31
	Newton 75
	Old Weston 401
	Owlwell 75
	Papworth Everard X3 6 8
	Perry 400
	Romans' Edge X3* 478
	Romsey Town 196
	Sapley 478
	Spaldwick 400
	Stapleford 31
	Steeple Gidding 401
	Slow Longa 400
	St Ives C
	St Neots Market Place 6 61 62 63
	St Neots Railway Station 61 63
	Swavesey (Busway) C
	Tadlow 75
	Thriplow 31
	Upton 401
	Waterbeach 196
	West Cambridge U X3*
	Wimpole 75
	Winwick 401
	Woolley 401
	Wrestlingworth 75

* service stops very near to location

Contains OS data © Crown copyright and database right 2017

the busway C Fenstanton - St Ives - Cambridge

Table with bus routes (Mondays to Fridays, Saturdays, Sundays & Public Holidays) and arrival/departure times for various stops from Fenstanton to Cambridge.

Table with bus routes (Saturdays, Sundays & Public Holidays) and arrival/departure times for various stops from Fenstanton to Cambridge.

Table with bus routes (Sundays & Public Holidays) and arrival/departure times for various stops from Fenstanton to Cambridge.

Universal The University bus for everyone

Table with bus routes (Mondays to Fridays) and arrival/departure times for various stops from Eddington Avenue to Biomedical Campus.

Table with bus routes (Mondays to Fridays) and arrival/departure times for various stops from Eddington Avenue to Biomedical Campus.

Table with bus routes (Mondays to Fridays) and arrival/departure times for various stops from Biomedical Campus to Addenbrooke's Hospital.

Table with bus routes (Mondays to Fridays) and arrival/departure times for various stops from Biomedical Campus to Addenbrooke's Hospital.

Table with bus routes (Saturdays) and arrival/departure times for various stops from Eddington Avenue to Addenbrooke's Hospital.

Table with bus routes (Mondays to Fridays) and arrival/departure times for various stops from Biomedical Campus to Addenbrooke's Hospital.

Table with bus routes (Mondays to Fridays) and arrival/departure times for various stops from Cambridge Railway Station to Eddington Avenue.

IMPORTANT These times commence Friday 8 September

then every 15 mins until

then every 15 mins until

then every 15 mins until

then every 20 mins until

then every 20 mins until

then every 20 mins until

then every 30 mins until

Table with bus routes (Mondays to Fridays, Saturdays, Sundays & Public Holidays) and arrival/departure times for various stops from Huntingdon to Long Road College.



Table with bus routes (Mondays to Fridays, Saturdays) and arrival/departure times for various stops from Fenstanton to Barton.

Table with bus routes (Mondays to Fridays, Saturdays) and arrival/departure times for various stops from Fenstanton to Barton.

Table with bus routes (Mondays to Fridays, Saturdays) and arrival/departure times for various stops from Fenstanton to Barton.

Table with bus routes (Mondays to Fridays, Saturdays) and arrival/departure times for various stops from Fenstanton to Barton.

Table with bus routes (Mondays to Fridays, Saturdays) and arrival/departure times for various stops from Fenstanton to Barton.

Table with bus routes (Mondays to Fridays, Saturdays) and arrival/departure times for various stops from Fenstanton to Barton.

Table with bus routes (Mondays to Fridays, Saturdays) and arrival/departure times for various stops from Fenstanton to Barton.

Table with bus routes (Mondays to Fridays, Saturdays) and arrival/departure times for various stops from 75 to 196.

Table with bus routes (Mondays to Fridays, Saturdays) and arrival/departure times for various stops from 400 to 401.

Table with bus routes (Mondays to Fridays, Saturdays) and arrival/departure times for various stops from 400 to 401.

Table with bus routes (Mondays to Fridays, Saturdays) and arrival/departure times for various stops from 400 to 401.

Table with bus routes (Mondays to Fridays, Saturdays) and arrival/departure times for various stops from 400 to 401.

Table with bus routes (Mondays to Fridays, Saturdays) and arrival/departure times for various stops from 400 to 401.

Table with bus routes (Mondays to Fridays, Saturdays) and arrival/departure times for various stops from 400 to 401.

Christmas and New Year Festival Period. There is usually no service on Christmas Day, Boxing Day or New Year's Day. Please look out for information on our website or follow us on Twitter @egwhippet

Real Time Information Screens. Many bus stops across Cambridgeshire have Real Time Information (RTI) displays provided by the County Council. All our Whippets are microchipped so they can be located.

Cambridgeshire School Term Times. Autumn term 2017 (4 September to 19 December 2017), Spring term 2018 (3 January to 29 March 2018), Summer term 2018 (16 April to 24 July 2018).

Not in sequential order. Buses stop on opposite side of road to normal